

Aim

- I can create a classification key.
- I can show the characteristics of living things in a table and a key.

Success Criteria

- I can identify the characteristics of living things.
- I can use the characteristics of living things to sort them using a classification key.
- I can show the characteristics of living things in a table.
- I can create a classification key.

twinkl.co.uk

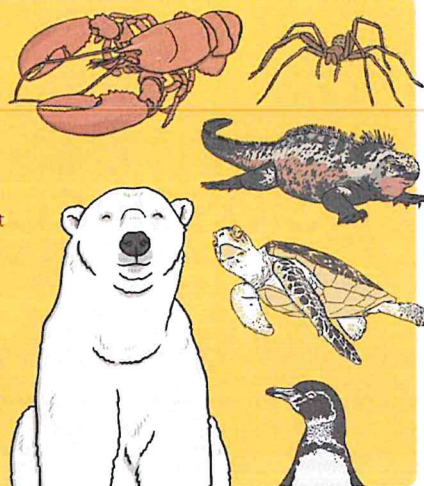
Characteristics

Today we are going to create our own branching keys to identify living things by looking at their characteristics.

The characteristics of a living thing are what make it similar or different to other living things.

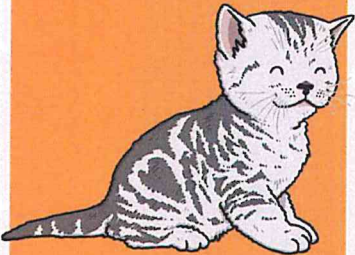
All species of living thing have a unique set of characteristics.

Species with similar characteristics are put into groups. This is how we classify living things.



twinkl.co.uk

Characteristics




- Is awake
- Has fur
- Is cute
- Has four legs
- Has a tail
- Has whiskers
- Is a carnivore
- Is a baby
- Likes milk
- Plays with string

Characteristics

These are some of the characteristics of the domestic cat:

- Has whiskers
- Has four legs
- Has fur
- Is a carnivore
- Has a tail



These are **not** characteristics of the species:

- Is awake
- Is cute
- Likes milk
- Is a baby
- Plays with string

Why not?

Characteristics

What are the characteristics of this living thing?




Photo courtesy of berriedup (@flickr.com) - granted under creative commons licence - attribution

twinkl.co.uk

This slide features a green background with a white circular pattern. At the top, the word "Characteristics" is written in bold black text. To the right is a circular icon with two stylized faces. Below the title, a pink rectangular box contains the question "What are the characteristics of this living thing?". In the center of this box is a photograph of a brown, spiky insect with long legs, resting on a green leaf. At the bottom of the slide, there is a small attribution line and the twinkl.co.uk logo.

Characteristics

What are the characteristics of this living thing?





Photo courtesy of kar3kids (@flickr.com) - granted under creative commons licence - attribution

twinkl.co.uk

This slide features a green background with a white circular pattern. At the top, the word "Characteristics" is written in bold black text. To the right is a circular icon with two stylized faces. Below the title, a pink rectangular box contains the question "What are the characteristics of this living thing?". In the center of this box is a photograph of a cluster of pink crocus flowers with yellow centers, growing from the ground. At the bottom of the slide, there is a small attribution line and the twinkl.co.uk logo.

Characteristics



What are the characteristics of this living thing?





Photo courtesy of kars4kids (@flickr.com) - granted under creative commons licence - attribution

Classification Tables



Each group will receive pictures of 8 living things.

Record which living thing has each characteristic by putting a tick or a cross in the table on your activity sheet.

Woodland Habitat Classification

Record which living thing has each characteristic by putting a tick or a cross in the table. Write your own questions in the last two boxes of the table.

	kissel	hedge	owl	woodpecker	hedgehog	oak tree	owl	moss
Does it have wings?								
Is it a vertebrate?								
Does it have legs?								
Does it have a trunk?								
Does it have spines?								

Classification Keys

You are going to create a classification key to sort your living things.
Look carefully at these living things. What question could you ask to split them into two groups?

twinkl.co.uk

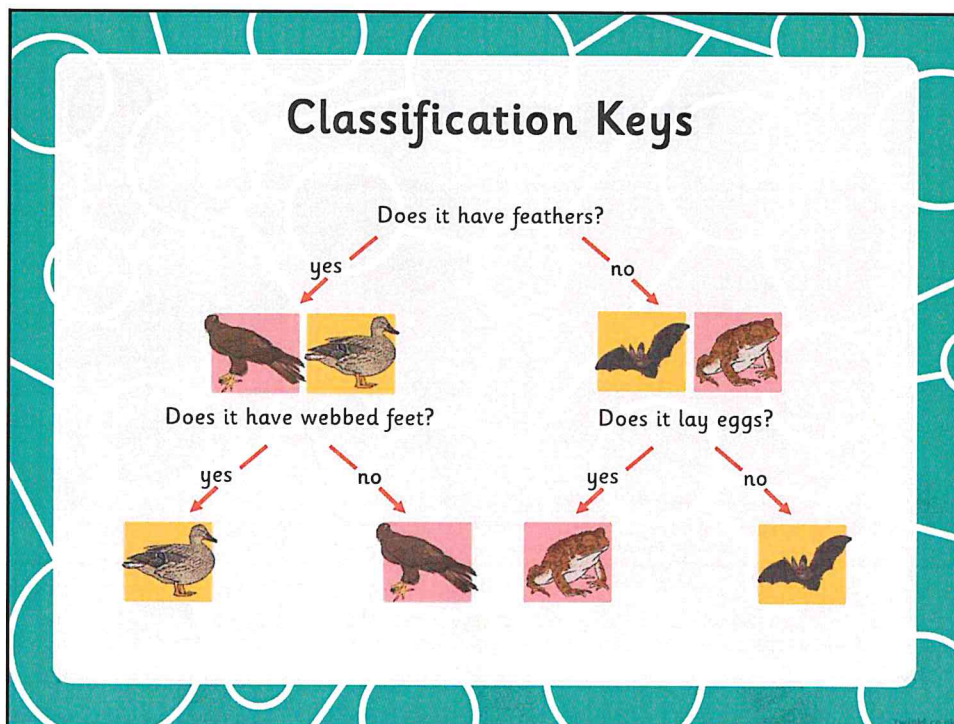
Classification Keys

Is it a vertebrate?

yes no

Choose one set of living things.
What question could you ask to split these living things into two groups?

twinkl.co.uk



Classification Keys

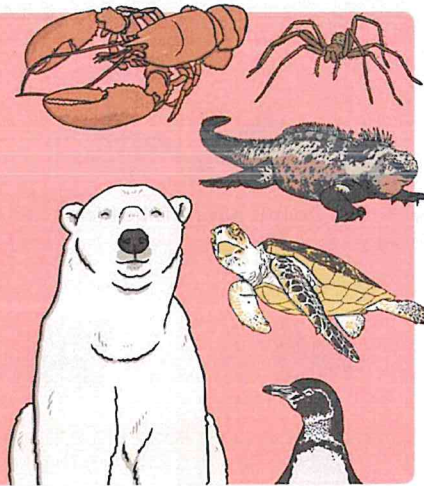


Have a go at arranging your living things into classification keys by choosing questions that let you split each group into two.

Write your questions on sticky notes and draw arrows to show how you move down the key.

Use the questions on your classification tables as a starting point if you need to.

Be sure to test your key at the end to make sure that the path works correctly for each living thing.



twinkl.co.uk

Testing and Evaluating



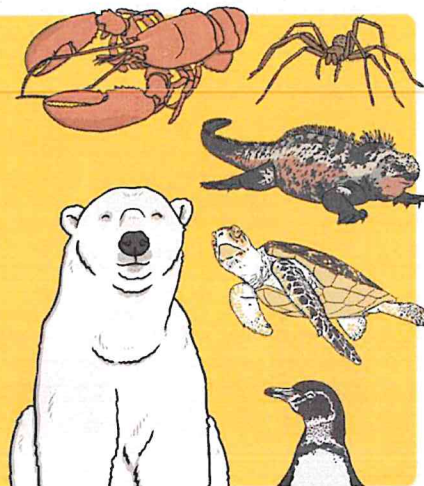
Follow the path that leads to each living thing.

Does each path work correctly?

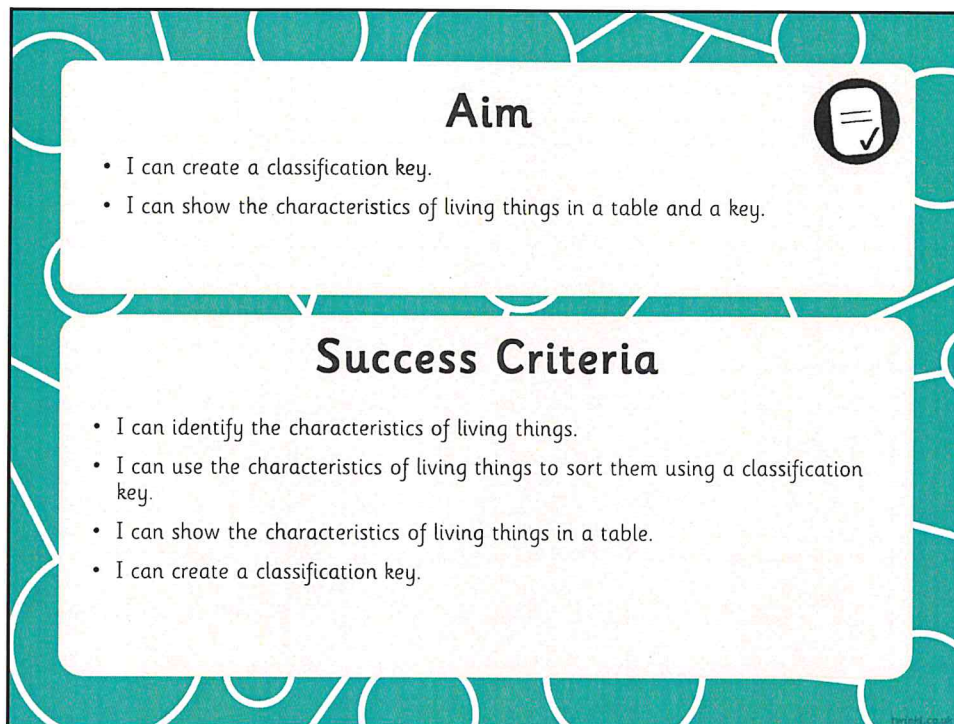
Do the questions used in the key describe the characteristics of the living things?

What could make this key better?

What has been done well?




twinkl.co.uk



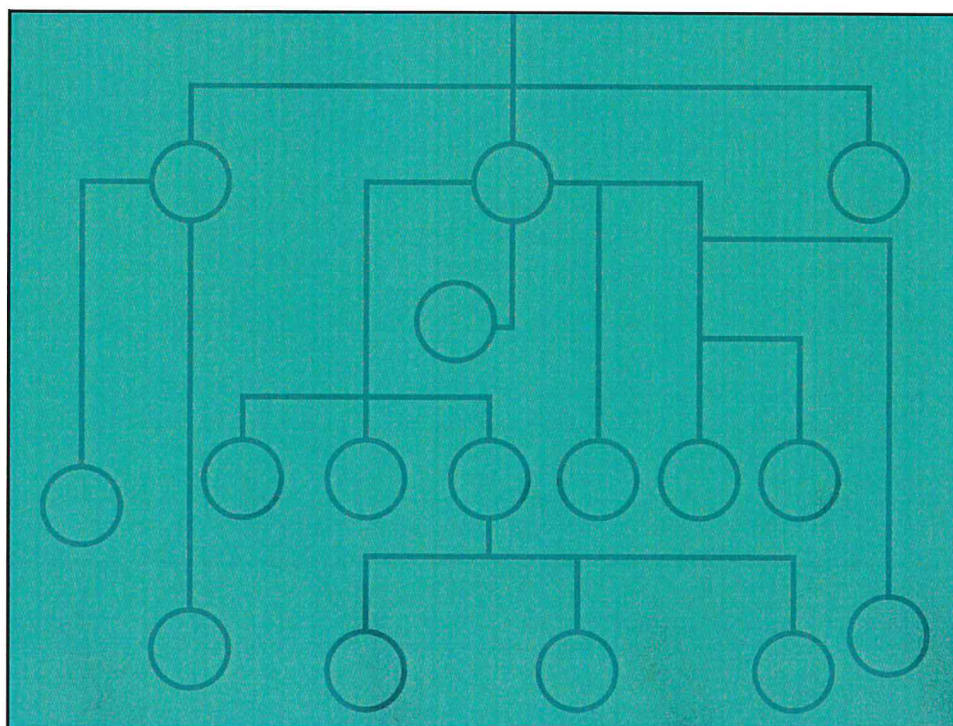
Aim

- I can create a classification key.
- I can show the characteristics of living things in a table and a key.



Success Criteria

- I can identify the characteristics of living things.
- I can use the characteristics of living things to sort them using a classification key.
- I can show the characteristics of living things in a table.
- I can create a classification key.

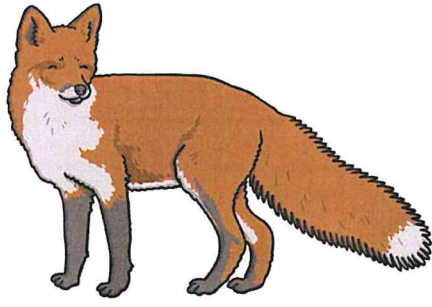




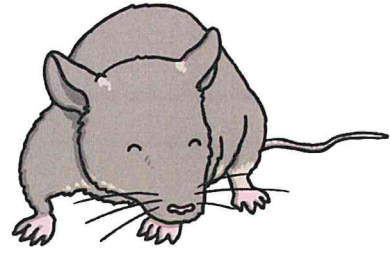
Urban Habitat Classification

Fill in the table with ticks and crosses to show the characteristics of each living thing.

	fox	rat	squirrel	pigeon	slug	woodlouse	dandelion	nettle
Is it a plant?								
has it got legs?								
Is it a vertebrate?								
Does it climb trees?								
Does it have a bushy tail?								
Does it have feathers?								
Does it have a yellow flower?								



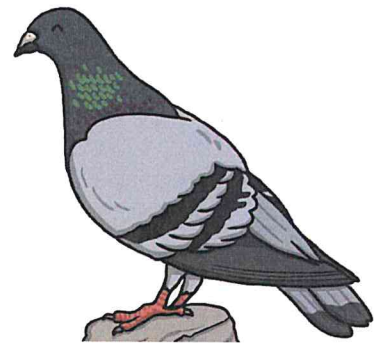
fox



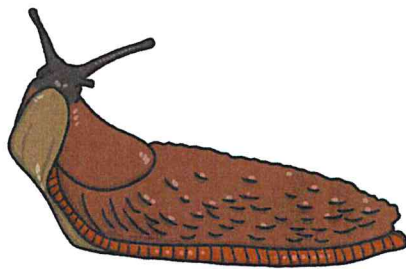
rat



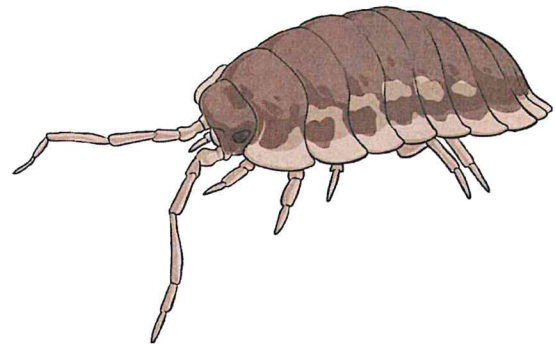
squirrel



pigeon



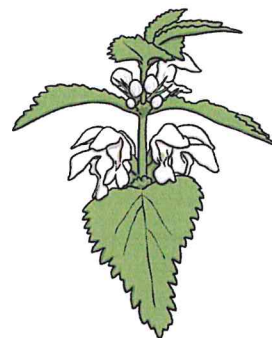
slug



woodlouse



dandelion



nettle

Is it a plant?		Does it have a bushy tail?	
Has it got legs?		Does it have feathers?	
Is it a vertebrate?		Does it have a yellow flower?	
Does it climb trees?		Yes	Yes
Yes	Yes	Yes	Yes
Yes	No	No	No
No	No	No	No

